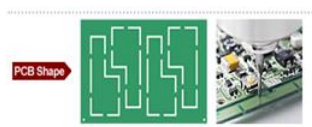


**SAM-CT23NJ**  
**SAM-CT34NJ**  
**SAM-CT56NJ**

Super function and high speed  
with image processing system



Japan high-quality 23/34/56NJ will bring you high-productivity!  
 Compact De-panelling machine  
 Easy programming by CCD camera

	SAM-CT23NJ	SAM-CT34NJ	SAM-CT56NJ
PCB Size(Max.)	250 × 350mm	300 × 400mm	500 × 600mm
PCB Thickness	0.4-2.0mm		
PCB Material(Resin)	FR4, CEM1, CEM3,etc.		
Router bit Diameter	φ0.8, 1.0, 1.2, 1.5, 2.0mm		
Cutting Speed(Max.)	50mm/sec		
Moving Speed(Max.)	800mm/sec		
Repeat Accuracy	±0.01mm		
Z Axis Stroke(Max.)	40mm		
Router Depth setting	Auto 5 stages		
Spindle Spec.	5000-60,000rpm		
X,Y,Z Axes Control	AC servo		
Power Voltage	3 φ AC400V 50/60Hz		
Power Consumption	3.0KVA		
Pneumatic Pressure	0.5Mpa		
Air Consumption	20-30L/min (A.N.R)		
Weight for Main Unit	Approx. 300kg		
Outer Dimension	W800 × D1105 × H1322 mm	W900 × D1205 × H1330mm	W1140 × D1380 × H1368mm
W × D × H(mm)	Approx. 350kg	Approx. 400kg	Approx. 550kg

# The reason why Sayaka router 23/34/56 NJ are chosen by customer

## 1. Easy Programming by CCD camera

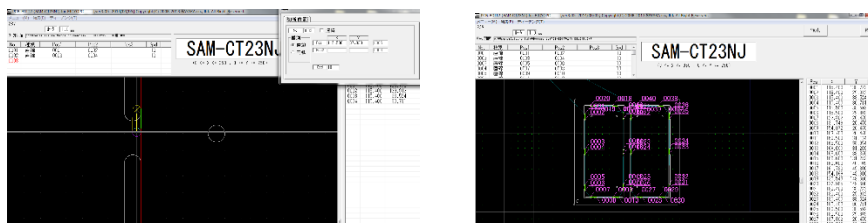
CCD camera captures an image of the PCB and easy programming of cutting paths is achieved by simple Point-and-Click Windows-based preparation on the computer screen. **Time is reduced and programming is simplified by this software.**

CCD Camera reads QR code, and cutting-program will be selected for each PCB automatically. It enables customer to eliminate the human error and it will bring you high-productivity.



## 2. Easy programming by CAD(DXF) (option)

Using DXF on a software is the other way of programming. It can be done by your own computer without being connected to the machine. **Teaching with the software is as easy as the camera teaching: Point-and-Click**, offsetting data and editing order. Teaching data can also be saved in the computer.



## 3. Smooth cut surface

The surface of PCB will be cut very smooth by 23/ 34/ 56NJ and **minimize the stress on PCB.** Finally it leads to the high-quality of your product as well.

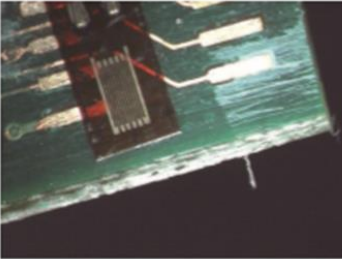
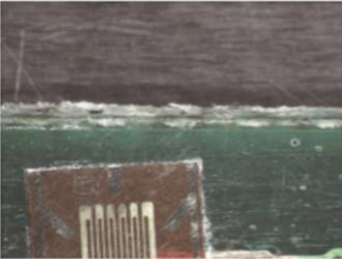
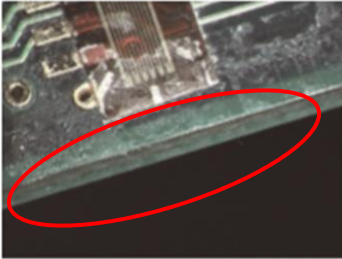
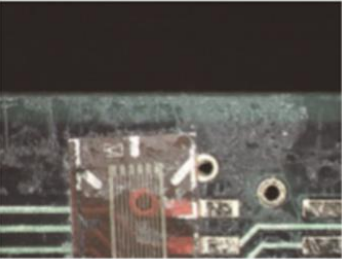
After you using it at your workplace, you will realize the good performance of 23/ 34/ 56NJ.

Sayaka has been manufacturing de-panelling machine **for 26 years in SMT field**, and through the long-term experience, Sayaka can offer you high-quality router machine.

The cut surface is more accurate than other competitors.

In case you cut the PCB by hand, the cut part will be distorted due to human operation.

And you don't need to worry about the human error, labor accident by using Sayaka router machine and **23Q will enable you to save the time**, compared with operator.

Cutting method	Enlarged image of cutting part	
V notch roller cutter		
Router machine 23NJ		

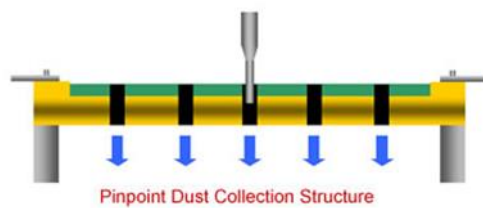
4. Pinpoint dust collection leads to good quality of your final product

Dust collection from underside of cutting fixture, it minimizes adhesion of dust on the PCB.

Our customer is really satisfied with this point and it will lead to the good quality of your product as well, we believe.

You don't need to place blower to clean up the dust adhered on the surface of PCB, it means **1 process of blower in the manufacturing line will become unnecessary.**

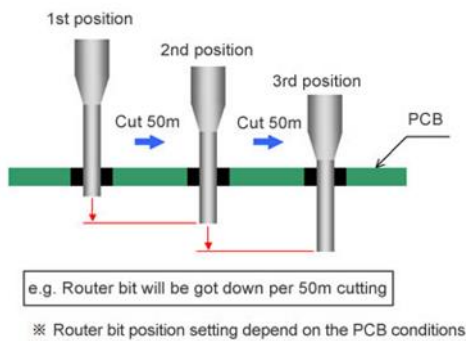
Finally you can save cost and space by reducing blowing process.



## 5. Japan High-quality/ Low maintenance

Sayaka router machine is built toughly. Even after many years use, **customer doesn't need to replace the parts periodically**. It has strong durability.

Moreover, the height of router bit can be changed manually into 3 phases, it enables router bit to be used for quite long time.



The comment from customer:

After using 23NJ, we realized how easy to program and good quality. Usually it took 1 day to make a programming in the past, but now the time was reduced to only 30-60 minutes. And now 23NJ was acknowledged as international standard machine for our all factories located in all over the world.



Dear Customer,

Do you have any problem about cutting PCB board?

Please take a look at your workplace again, there might be a chance to improve the productivity.

Your decision might reduce the trouble at your factory, and finally it will bring you the benefits.

If you are interested in it, please feel free to ask us for a quotation.

*We assist you with your step into the future of manufacturing!*

*Please contact us for more information.*

Seika Sangyo GmbH  
Wahlerstraße 10  
40472 Düsseldorf, GERMANY  
Phone: +49 211-4158-112  
Mail: [sales-d2@seika-germany.com](mailto:sales-d2@seika-germany.com)

